

General Information

Immunogen	DYKDDDDK-KLH conjugate
IgG type	Rabbit IgG
Clonality	Monoclonal
Applications	ELISA, WB, FC, IF
Specificity	DYKDDDDK (same epitope to Sigma FLAG tag)
Formulation	0.22 µM filtered solution of PBS, pH 7.4, 0.09% sodium azide
Purity	> 95% determined by SDS-PAGE
Storage	≤ -20 °C for 1 year or 4 °C for 1 months

Abbreviations:

ELISA: Enzyme-linked immunosorbent assay; ITA: immunoturbidimetric assay; IP: immunoprecipitation; IHC: immuno-histochemistry; IF: immunofluorescence. WB: western blot; FC: flow cytometry

Storage

This antibody is shipped at 4 °C. This product is stable for 12 months from date of receipt when stored at -20 °C to -70 °C. Avoid freeze/thaw cycles.

Hazard/Biohazard

This antibody contains 0.09% sodium azide as preservative. Please handle and dispose the product properly. No known biohazard is associated with this product.

Background

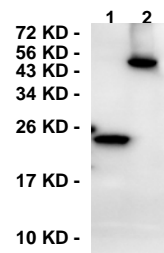
DYKDDDDK polypeptide tag (i.e. FLAG® tag, currently owned by Sigma) is a common protein tag added to recombinant proteins. DYKDDDDK was originally used by Munro and Pelham in 1984. This artificially designed tag facilitates the identification and purification of recombinant proteins. The hydrophilic nature of DYKDDDDK make it less likely to denature or inactivate proteins to which it is fused. Moreover, N-terminal FLAG tags can be readily cleaved from proteins with enterokinase. It is one of the most widely used protein tags.

Preparation

Monoclonal antibody is produced by immunizing rabbit with DYKDDDDK peptide and purified using protein A resin.

Application

Western blot

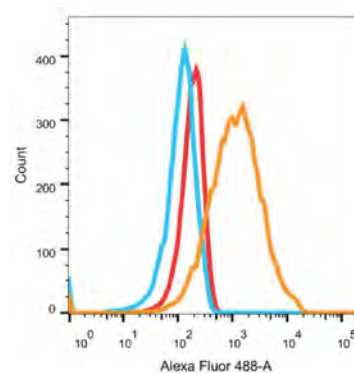


293T cell lyates transfected with DYKDDDDK-proteins
 lane 1: DYKDDDDK-protein 1; 25 ug;
 lane 2: DYKDDDDK-protein 2; 25 ug;

1E2 dilution: 1ug/ml

Blocking and antibody dilution buffer is 5% skim milk (w/v), 1x TBS, 0.05% Tween-20.

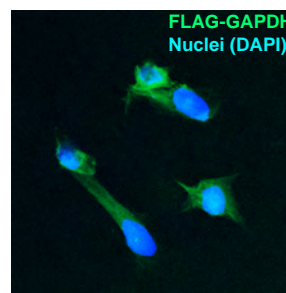
Flow cytometry



— 1E2 only
 — FTIC-2° Ab control
 — 1E2 + FTIC-2° Ab

Cell source:
 293T cells transfected with
 FLAG-PQBP1

Immunofluorescence



Cell source:
 293T cells transfected with
 FLAG-GAPDH

Research Use or Manufacturing Only