

Rabbit anti-Myoglobin monoclonal antibody, clone 1D4

Catlog No.: R15003MD4

Background

Myoglobin (Mb) is an iron- and oxygen-binding protein which is expressed in vertebrate skeletal and cardiac muscles. It contains one polypeptide chain and one heme group. It plays an essential role in the storage and transport of oxygen to mitochondria. Reversible oxygen binding occurs by a linkage with the imidazole nitrogen of the 91st histidine residue in the myoglobin chain. Myoglobin is released from damaged muscle tissue, making it a sensitive marker for muscle injury and an important clinical marker for heart attack in patients with chest pain.

Properties

Concentration	1 mg/ml
Form	Liquid, 100 ul
Storage buffer	1x PBS, 0.09% NaN ₃
Purity	> 95% via protein A purification
Clonality	monoclonal
Isotype	IgG
Immunogen	Full length recombinant human Myoglobin protein.
Species reactivity	human

Applications

Optimal dilutions/concentrations of this antibody should be determined by the user in each application.

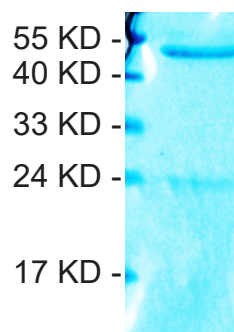
WB	Tested. 1:1000 – 1:2000 dilution
ELISA	Tested. 1:1000 – 1:10,000 dilution
Flow cytometry	Not tested.
TIA	Tested.
IHC	Not tested.
IF	Not tested.

Abbreviation: WB: western blot; ELISA: enzyme-linked immunosorbent assay; TIA: turbidimetric immunoassay; IP: immunoprecipitation; IHC: immunohistochemistry; IF: immunofluorescence.

Terms and Conditions:

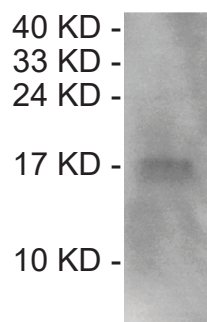
Except as otherwise agreed in writing by our authorized representative, all products are for RESEARCH USE ONLY, AND NOT FOR HUMAN OR ANIMAL THERAPEUTIC OR DIAGNOSTIC USE. You represent and warrant to us that you will properly test, use, and, to the extent authorized, market any products purchased from us and any final articles made from them in accordance with the practices of a technically qualified individual and in strict compliance with all applicable governmental food, drug, device, and cosmetic requirements and other applicable governmental requirements, now and hereinafter enacted.

Images



SDS-PAGE

left lane: protein MW ladder
right lane: denatured 1D4 mAb
demonstrated one pair of heavy chain and light chain bands at expected molecular weight of 50 KD and 24 KD, ensuring a successful purification of 1D4 mAb.



Western blot

Rabbit mAb 1D4 is able to recognize native human Myoglobin protein at 1ng per lane.

Myoglobin: 1 ng/lane
1D4 dilution: 1:1000 (1ug/ml)
Blocking and antibody dilution buffer is 5% skim milk (w/v), 1x TBS, 0.05% Tween-20.

Source/Purification

Monoclonal antibody is produced by immunizing rabbit with full length human Myoglobin and purified using protein A resin.

Storage

The product is shipped at 4 °C. Upon delivery, please aliquot and store at -20 °C for long term preservation. Avoid freeze/thaw cycles.